

First Term Data - Entering Fall students compared to Spring census.

- Retention Rate - a measure of students retained in their program after their first term.
- Persistence Rate - a measure of students persisted within the institution after their first term.

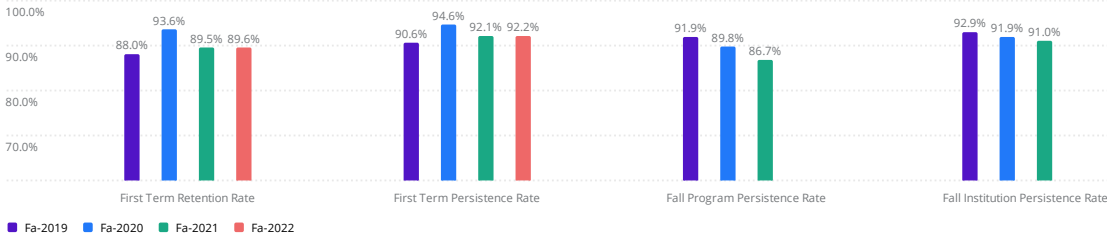
(including: changed programs, dropping a higher degree and completing the lower degree)

Fall to Fall Data - Fall data compared to the following Fall census.

- Program Persistence Rate: a measure of students retained in their program from Fall to Fall.
- Institution Persistence Rate: a measure of students persisted within the institution from Fall to Fall.

(including: changed programs, dropping a higher degree and completing the lower degree)

Retention & Persistence Rates 3,860



Overall Averages 3,860

First Term Retention Rate	First Term Persistence Rate	Fall Program Persistence Rate	Fall Institution Persistence Rate
90.3%	92.5%	89.4%	91.9%

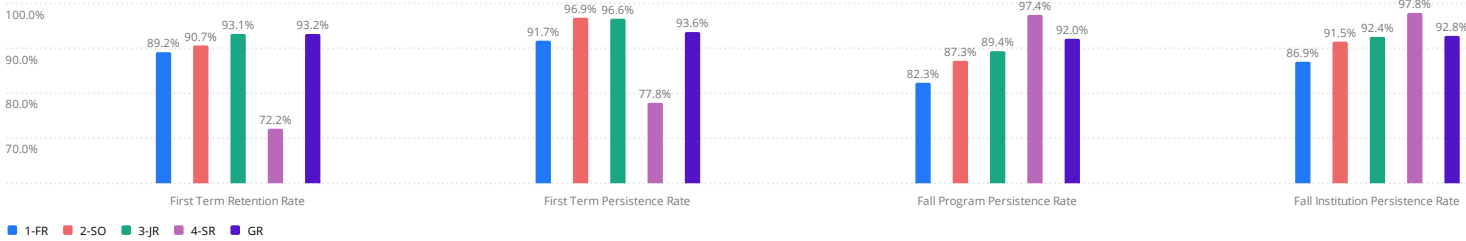
FIRST TERM: Retention & Persistence 1,479

Yr-Trm	Entering in Program	Retained in Program	Program Retention Rate	Institution Attrition	Persisted in Institution	Institution Persistence Rate
Fa-2019	309	272	88.0%	29	280	90.6%
Fa-2020	406	380	93.6%	22	384	94.6%
Fa-2021	419	375	89.5%	33	386	92.1%
Fa-2022	345	309	89.6%	27	318	92.2%

FALL TO FALL: Retention & Persistence 4,657

Yr-Trm	Fall	Completion s	Persisted in Program	Program Persistence Rate	Institution Attrition	Persisted in Institution	Institution Persistence Rate
Fa-2019	1,078	334	657	91.9%	76	668	92.9%
Fa-2020	1,208	404	688	89.8%	98	706	91.9%
Fa-2021	1,229	406	681	86.7%	111	712	91.0%
Fa-2022	1,142	-	-	-	-	-	-

Persistence Rate by Class (to see each year, use the Year-Term filter above) 3,860



Persistence by Class, Yr-Trm 3,860

	First Term Retention Rate				First Term Persistence Rate				Fall Prog Persistence Rate				Fall Inst Persistence Rate			
	Fa-2019	Fa-2020	Fa-2021	Fa-2022	Fa-2019	Fa-2020	Fa-2021	Fa-2022	Fa-2019	Fa-2020	Fa-2021	Fa-2022	Fa-2019	Fa-2020	Fa-2021	Fa-2022
1-FR	85.2%	92.9%	88.6%	87.5%	88.9%	94.3%	92.4%	88.3%	83.7%	83.8%	79.9%	-	86.8%	87.4%	86.5%	-
2-SO	100.0%	100.0%	100.0%	88.9%	100.0%	100.0%	100.0%	96.3%	94.0%	85.9%	81.3%	-	94.5%	89.1%	90.4%	-
3-JR	100.0%	100.0%	100.0%	89.5%	100.0%	100.0%	100.0%	94.7%	91.8%	90.3%	86.4%	-	92.4%	93.2%	91.7%	-
4-SR	75.0%	100.0%	25.0%	100.0%	87.5%	100.0%	25.0%	100.0%	96.9%	97.5%	97.7%	-	96.9%	98.1%	98.3%	-
CT	0.0%	-	0.0%	-	0.0%	-	0.0%	-	50.0%	-	100.0%	-	50.0%	-	100.0%	-
GR	92.9%	94.7%	92.5%	92.7%	93.7%	94.7%	93.3%	92.7%	93.3%	92.7%	90.2%	-	94.2%	93.2%	91.0%	-

Rates per Program (use the Year-Term filter to see individual year results. 4,657

	Fall	First Term Retention Rate	First Term Persistence Rate	Fall Program Persistence Rate	Fall Institution Persistence Rate
AGCS	10	100.0%	100.0%	100.0%	100.0%
AGNP	39	81.3%	87.5%	82.8%	89.7%
ANPR	20	88.9%	88.9%	100.0%	100.0%
BSHI	40	100.0%	100.0%	92.9%	92.9%
COTM	1	0.0%	0.0%	0.0%	0.0%
DMSO	69	91.7%	91.7%	93.8%	93.8%
DSBS	124	83.0%	87.2%	79.3%	87.0%
DSDC	2	0.0%	0.0%	-	-
EDDH	271	94.7%	94.7%	94.7%	94.7%
EDDP	39	85.7%	85.7%	75.0%	75.0%
FNPR	316	94.2%	94.2%	89.6%	90.9%
HSBS	8	50.0%	100.0%	83.3%	100.0%
IMDC	5	100.0%	100.0%	100.0%	100.0%
IMSC	145	91.8%	93.4%	70.4%	87.0%
LBSN	34	83.3%	91.7%	82.6%	87.0%
MAMC	2	50.0%	50.0%	100.0%	100.0%
MBHC	95	94.4%	94.4%	96.2%	96.2%
MGRI	6	60.0%	60.0%	50.0%	50.0%
NRAC	182	90.1%	100.0%	79.4%	100.0%
NRSG	2,101	93.2%	93.2%	91.3%	92.3%
NSCC	11	100.0%	100.0%	80.0%	80.0%
NSED	142	91.5%	93.6%	88.2%	90.0%
NSEX	101	83.8%	83.8%	86.7%	86.7%
NSIN	45	100.0%	100.0%	91.9%	91.9%
OCTH	208	100.0%	100.0%	100.0%	100.0%
PDPHP	1	0.0%	0.0%	-	-
PHPR	22	100.0%	100.0%	92.9%	92.9%
PMND	2	0.0%	0.0%	50.0%	50.0%
PMNI	5	50.0%	50.0%	20.0%	20.0%
PMNX	1	-	-	100.0%	100.0%
PPOTD	9	80.0%	80.0%	100.0%	100.0%
PTAS	105	73.3%	75.0%	88.3%	88.3%
RADT	68	82.9%	92.7%	84.9%	88.7%
RBSN	156	88.2%	88.2%	93.2%	93.9%
RCDC	1	100.0%	100.0%	100.0%	100.0%
RESC	10	50.0%	50.0%	83.3%	83.3%
RMCC	3	100.0%	100.0%	100.0%	100.0%
RMND	37	88.9%	88.9%	92.0%	96.0%
RMNI	8	50.0%	50.0%	42.9%	57.1%
RMNX	51	88.9%	88.9%	95.1%	95.1%
RTBS	63	83.3%	88.9%	67.9%	77.4%
RTDC	4	100.0%	100.0%	100.0%	100.0%
SURG	70	81.1%	83.8%	80.9%	85.1%
WHPM	25	100.0%	100.0%	91.3%	91.3%

Rates for Students in Multiple Programs (use the Year-Term filter to see individual year results.


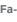
276		⌵				
	Fall		First Term Retention Rate	First Term Persistence Rate	Fall Program Persistence Rate	Fall Institution Persistence Rate
BSHI	SURG	2	100.0%	100.0%	100.0%	100.0%
DSBS	DMSO	104	82.6%	87.0%	77.6%	85.5%
EDDH	EDDP	1	100.0%	100.0%	100.0%	100.0%
HSBS	PTAS	1	-	-	100.0%	100.0%
	SURG	1	100.0%	100.0%	100.0%	100.0%
IMSC	RADT	116	93.3%	95.0%	67.9%	88.1%
NRAC		1	100.0%	100.0%	100.0%	100.0%
	NRSG	1	100.0%	100.0%	100.0%	100.0%
NSED	NSEX	2	-	-	100.0%	100.0%
NSEX	NSED	1	-	-	100.0%	100.0%
RTBS	RESC	45	83.3%	88.9%	66.7%	79.5%
SURG	HSBS	1	-	-	100.0%	100.0%



Fall to Fall Status Breakdowns 4,657

Fall to Fall status ⌵	Fa-2019	Fa-2020	Fa-2021	Fa-2022
Persisted in Program - Dropped Higher Degree	-	-	2	-
Persisted in Program - Completed Lower Degree	16	16	10	-
Persisted in Program - Added Higher Degree	-	-	1	-
Persisted in Program	641	672	670	-
Persisted at NMC - Changed Program	11	18	33	-
No Data	-	-	-	1,142
Completion Lower Degree - Dropped Higher	-	7	17	-
Completion	334	397	385	-
Attrition - On Formal Leave of Absence	-	38	29	-
Attrition - Not Enrolled at Other Institution	56	50	43	-
Attrition - Enrolled at Other Institution	20	10	39	-

Let's Dive into the Students that did not Persist

Click on a program code below to quickly update the tables to focus on a specific program OR use the filters above to choose a population of students.

Students Not Retained by Program 373 			
Program	Fa-2019 	Fa-2020	Fa-2021
NRSG	37	47	52
IMSC	6	7	19
DSBS	6	7	6
NSEX	5	4	1
NSED	5	3	5
FNPR	5	9	11
RTBS	4	8	5
RADT	4	2	2
EDDH	3	5	4
AGNP	3	-	2
SURG	2	6	1
PMNI	2	1	1
RMNI	1	2	1
PTAS	1	2	6
PMND	1	-	-
DMSO	1	2	-
COTM	1	-	-
WHPM	-	2	-
RMNX	-	-	2
RMND	-	1	1
RESC	-	1	-
RBSN	-	1	8
PHPR	-	-	1
NSIN	-	-	3
NSCC	-	-	1
NRAC	-	8	19
MGRI	-	-	2
MBHC	-	2	1
LBSN	-	1	3
HSBS	-	1	-
EDDP	-	1	4
BSHI	-	-	2

Exit Reasons of Students Not Retained in Program 373 			
Exit Reason	Fa-2019	Fa-2020 	Fa-2021
Leave of Absences	19	38	34
Personal Reasons	10	24	22
Program Changes	11	18	29
Administratively Withdrawn	25	14	6
Transferred to Another Institution	9	11	13
Academic Reasons	2	7	6
Financial Reasons	2	3	7
Family Obligation	2	3	4
Relocation	2	2	5
Medical Reasons	-	2	-
Suspension	-	1	1
Program Dismissals	3	-	11
NL	1	-	-
Graduated	-	-	21
Academic Dismissals	1	-	4
Sum	87	123	163

Exit Reason Definitions			
Academic Reasons	- This is used if the student is on probation or having academic difficulties and chooses not to continue. The student formally withdrew.		
Administrative Withdrawal	- Students who don't register for classes but don't formally withdraw. This will be used in the future to also update students that failed their classes prior and then did not show up the next term.		
Academic Suspension	- They are suspended for a certain amount of time and then can return. The length is determined by the program.		
Program Dismissal	- Added this exit reason so Admissions and others can tell if the student was dismissed from a program versus from the college. If they were in a HP program Admissions would need to check with the program director to see if they can return. If they are nursing they may not return in any nursing major.		
Academic Dismissal	- Dismissal (from the College) is considered a permanent action, although appeals for readmission in exceptional circumstances will be considered. i.e. Student with two suspensions per policy would receive this exit reason unless appealed.		
Deceased or disabled	- The student is deceased or is totally and permanently disabled and thus unable to return to school.		
Financial Reasons	- Left for financial reasons		
Family Obligation	- Nursing needs to track students who leaves due to family obligations for graduation/completion rates.		
Graduated	- Student Graduated!		
Left to serve in Armed Forces	- The student left school to serve in the armed forces or was called up to active duty. (Do NOT include students already in the military who transfer to another duty station.)		
Church Missions	- The student left school to serve on an official church mission.		
Foreign Service	- The student left school to serve with a foreign aid service of the Federal Government, such as the Peace Corps.		
Leave of Absence	- Use when they are on LOA we flag them as this. If they don't come back the exit reason will change to the real reason they left us. The story of being LOA will be tracked in the LOA table.		
Medical Reasons	- Student left for Medical Reasons.		
Changing Program	- Internal change of a degree seeking program within NMC.		
Military Reasons	such as benefits ran out to the student having to move to another military base.		
No longer employed with Methodist Health System	- This student was employed with the Health System and was receiving benefits. The student is no longer employed therefore lost the benefits and has formally withdrawn.		
Personal Reasons	- Personal reasons are used for students that may not want to explain why they are leaving.		
Relocation	- Relocated to another area and can no longer attend.		
Transfer to Another Institution	- This exit reason was added to capture the students that are leaving NMC and subsequently attending another college. This is a requirement for IPEDS Outcome Measures. Nursing needs to track students who go to other institutes for graduation/completion rates.		

Where did our students go? Institution & Program data pulled Fall term after census for the students that did not persist. 65

Transfer Out Institution	Transfer Out Program	Fa-2019	Fa-2020	Fa-2021	Total
BELLEVUE UNIVERSITY	BUSINESS	1	-	-	1
	HEALTHCARE MANAGEMENT	1	-	-	1
CAPELLA UNIVERSITY	UNKNOWN	-	1	-	1
CLARKSON	NURSING	1	-	-	1
CLARKSON COLLEGE	FAMILY NURS PRACT	-	-	1	1
	NURSING	-	-	1	1
COLLEGE OF SAINT MARY	ELEMENTARY EDUCATION	1	-	-	1
CONCORDIA UNIVERSITY	K 12 SPECIAL EDUCATION	1	-	-	1
DES MOINES AREA COMMUNITY COLLEGE	CYBERSECURITY	-	-	1	1
GRAND CANYON UNIVERSITY	BACHELOR OF SCIENCE IN APPLIED MARKETING AND ADVERTISING	-	-	1	1
GRAND CANYON UNIVERSITY, AZ	MASTER OF SCIENCE IN NURSING WITH AN EMPHASIS IN LEADERSHIP IN HEALTH CARE	1	-	-	1
IOWA WESTERN COMMUNITY COLLEGE	DENTAL HYGIENE	-	-	1	1
	GENERAL STUDIES AS	-	1	-	1
	PRACTICAL NURSING	-	-	4	4
	SURGICAL TECHNOLOGY	-	1	-	1
LARAMIE COUNTY COMMUNITY COLLEGE	UNDECLARED NOT SEEKING DEGREE	-	-	1	1
MARYLAND UNIVERSITY OF INTEGRATIVE HEALTH	UNKNOWN	-	-	1	1
MARYVILLE UNIVERSITY	FAMILY NURSE PRACTITIONER	-	-	1	1
METROPOLITAN COMMUNITY COLLEGE	BUSINESS ADMINISTRATION	-	-	1	1
	GENERAL HEALTH STUDIES	-	-	1	1
	GENERAL STUDIES	1	2	2	5
	HUMAN SERVICES	-	-	1	1
	LIBERAL ARTS/ACAD TRANSFER	-	1	4	5
	PROFESSIONAL HEALTH STUDIES	3	-	1	4
	UNDECLARED	-	-	1	1
	UNKNOWN	-	-	1	1
NORTHEAST COMMUNITY COLLEGE	PRE PROFESSIONAL NURSING	-	-	1	1
OKLAHOMA CHRISTIAN UNIVERSITY	NURSING	-	-	1	1
ROCKHURST UNIVERSITY	ASSOC SCI ALLIED HEALTH	-	1	-	1
SOUTHEAST COMMUNITY COLLEGE - LINCOLN	HEALTH SCIENCES	-	-	2	2
SOUTHEAST TECHNICAL COLLEGE	INVASIVE CARDIOVASCULAR TECHNOLOGY	1	-	-	1
SOUTHERN NEW HAMPSHIRE- 1WEEK	COURSE WORK ONLY	-	-	1	1
UNIVERSITY OF KANSAS	PRE-BUSINESS	1	-	-	1
	BIOLOGY MAJOR	-	-	1	1
	ELEMENTARY EDUCATION MAJOR	-	-	1	1
	KINESIOLOGY MAJOR	-	-	1	1
UNIVERSITY OF NEBRASKA AT OMAHA	MULTIDISCIPLINARY STUDIES MAJOR	-	-	1	1
	PRE-PHYSICAL THERAPY PROGRAM	-	-	1	1
	PRE-SECONDARY EDUCATION/SPECIAL EDUCATION MAJOR	1	-	-	1
	PSYCHOLOGY MAJOR	-	-	1	1
UNIVERSITY OF NEBRASKA MEDICAL CENTER	Cardiovascular Interventional Technology	1	-	-	1
	RADIATION THERAPY	1	-	-	1

Transfer Out Institution	Transfer Out Program	Fa-2019	Fa-2020	Fa-2021	Total
UNIVERSITY OF NEBRASKA-LINCOLN	NUTRITION AND HEALTH SCIENCES	-	-	1	1
UNIVERSITY OF SOUTH DAKOTA	PRACTICAL NURSING	1	-	-	1
UNIVERSITY OF WISCONSIN - MILWAUKEE- WAUKESHA	UNKNOWN	-	-	1	1
VALENCIA COLLEGE	BS NURSING	-	1	-	1
WESTERN GOVERNORS UNIVERSITY	MANAGEMENT	-	-	1	1
	NURSING	-	-	1	1
WICHITA STATE UNIVERSITY TECH	PRE NURSING HEALTH SCIENCE	1	-	-	1
WINONA STATE UNIVERSITY - ROCHESTER CENTER	FAMILY NURSE PRACTITIONER BS TO DNP	-	1	-	1

Let's Dive into the Persistence Rates by Student Populations

Click on any of the highlighted populations to quickly update all the tables to focus on a specific population OR use the filters above to choose a population of students.

First Time Freshman 4,657

		Count	First Term Retention Rate	First Term Persistence Rate	Fall Prog Persistence Rate	Fall Inst Persistence Rate
First Time Entering	Fa-2019	44	81.8%	84.1%	75.0%	77.3%
	Fa-2020	49	95.9%	98.0%	87.8%	89.8%
	Fa-2021	50	92.0%	92.0%	84.0%	84.0%
	Fa-2022	44	88.6%	88.6%	-	-
Non-First Time Entering	Fa-2019	1,034	89.1%	91.7%	92.6%	93.6%
	Fa-2020	1,159	93.3%	94.1%	89.9%	92.0%
	Fa-2021	1,179	89.2%	92.1%	86.9%	91.3%
	Fa-2022	1,098	89.7%	92.7%	-	-

Part-Time/Full-Time 4,657

		Count	First Term Retention Rate	First Term Persistence Rate	Fall Prog Persistence Rate	Fall Inst Persistence Rate
Full-Time	Fa-2019	729	90.2%	92.5%	91.2%	92.5%
	Fa-2020	854	94.3%	95.2%	91.0%	93.3%
	Fa-2021	909	89.7%	93.0%	86.6%	91.5%
	Fa-2022	869	89.9%	92.3%	-	-
Part-Time	Fa-2019	349	75.0%	79.5%	93.4%	94.0%
	Fa-2020	354	90.0%	91.4%	87.0%	88.4%
	Fa-2021	320	88.8%	88.8%	87.2%	89.4%
	Fa-2022	273	88.1%	91.5%	-	-

Minority/Non-Minority 4,651

		Count	First Term Retention Rate	First Term Persistence Rate	Fall Prog Persistence Rate	Fall Inst Persistence Rate
Minority	Fa-2019	170	88.1%	90.5%	90.6%	91.8%
	Fa-2020	200	91.8%	93.4%	87.0%	88.5%
	Fa-2021	223	78.9%	86.8%	80.7%	87.0%
	Fa-2022	202	88.7%	94.3%	-	-
Non-Minority/Unknown	Fa-2019	908	88.0%	90.6%	92.2%	93.2%
	Fa-2020	1,008	93.9%	94.8%	90.4%	92.6%
	Fa-2021	1,006	91.8%	93.3%	88.1%	91.8%
	Fa-2022	934	89.6%	91.7%	-	-

First Generation 1,104

	Count	First Term Retention Rate	First Term Persistence Rate	Fall Prog Persistence Rate	Fall Inst Persistence Rate
Fa-2019	235	82.0%	85.2%	89.8%	90.2%
Fa-2020	272	93.0%	93.0%	89.3%	91.5%
Fa-2021	324	95.8%	95.8%	88.6%	93.5%
Fa-2022	273	86.0%	93.0%	-	-

NMC Housing 348

	Count	First Term Retention Rate	First Term Persistence Rate	Fall Prog Persistence Rate	Fall Inst Persistence Rate
Fa-2019	74	80.0%	82.9%	86.5%	89.2%
Fa-2020	87	100.0%	100.0%	92.0%	94.3%
Fa-2021	89	100.0%	100.0%	89.9%	95.5%
Fa-2022	98	94.3%	94.3%	-	-

Pell Recipient 4,657

	Count	First Term Retention Rate	First Term Persistence Rate	Fall Prog Persistence Rate	Fall Inst Persistence Rate
Fa-2019	1,078	88.0%	90.6%	91.9%	92.9%
Fa-2020	1,208	93.6%	94.6%	89.8%	91.9%
Fa-2021	1,229	89.5%	92.1%	86.7%	91.0%
Fa-2022	1,142	89.6%	92.2%	-	-

ADA Served 219

	Count	First Term Retention Rate	First Term Persistence Rate	Fall Prog Persistence Rate	Fall Inst Persistence Rate
Fa-2021	80	100.0%	100.0%	93.8%	98.8%
Fa-2022	139	68.4%	84.2%	-	-

Low Income (Data from Director of Financial Aid, using EFC factor that qualifies for Pell) 892

	Yes				
	Count	First Term Retention Rate	First Term Persistence Rate	Fall Prog Persistence Rate	Fall Inst Persistence Rate
Fa-2021	477	89.4%	89.4%	86.8%	89.9%
Fa-2022	415	89.3%	92.6%	-	-

SSS Served 237

	Count	First Term Retention Rate	First Term Persistence Rate	Fall Prog Persistence Rate	Fall Inst Persistence Rate
Fa-2020	78	100.0%	100.0%	89.7%	92.3%
Fa-2021	76	87.5%	100.0%	90.8%	96.1%
Fa-2022	83	100.0%	100.0%	-	-

NRAC Prior Highest Degree 130

	2_Masters				4_Bachelor				5_Associate				Unknown			
	First Term Retention Rate	First Term Persistence Rate	Fall Prog Persistence Rate	Fall Inst Persistence Rate	First Term Retention Rate	First Term Persistence Rate	Fall Prog Persistence Rate	Fall Inst Persistence Rate	First Term Retention Rate	First Term Persistence Rate	Fall Prog Persistence Rate	Fall Inst Persistence Rate	First Term Retention Rate	First Term Persistence Rate	Fall Prog Persistence Rate	Fall Inst Persistence Rate
Fa-2020	100.0%	100.0%	100.0%	100.0%	96.4%	100.0%	90.9%	100.0%	83.3%	100.0%	66.7%	100.0%	100.0%	100.0%	100.0%	100.0%
Fa-2021	80.0%	100.0%	80.0%	100.0%	88.4%	100.0%	74.4%	100.0%	75.0%	100.0%	58.3%	100.0%	100.0%	100.0%	33.3%	100.0%



	2_Masters		4_Bachelor		5_Associate		Unknown		
	Completion	Persisted at NMC - Changed Program	Completion	Persisted at NMC - Changed Program	Completion	Persisted at NMC - Changed Program	Completion	Persisted at NMC - Changed Program	Persisted in Program
	Count	Count	Count	Count	Count	Count	Count	Count	Count
Fa-2020	3	-	50	5	4	2	2	-	1
Fa-2021	4	1	32	11	7	5	1	2	-