



PERIANAL ABSCESSSES AND FISTULAE

Austin Person, MD
Colorectal Surgeon
Methodist Health System
February 22, 2025

1

DISCLOSURES

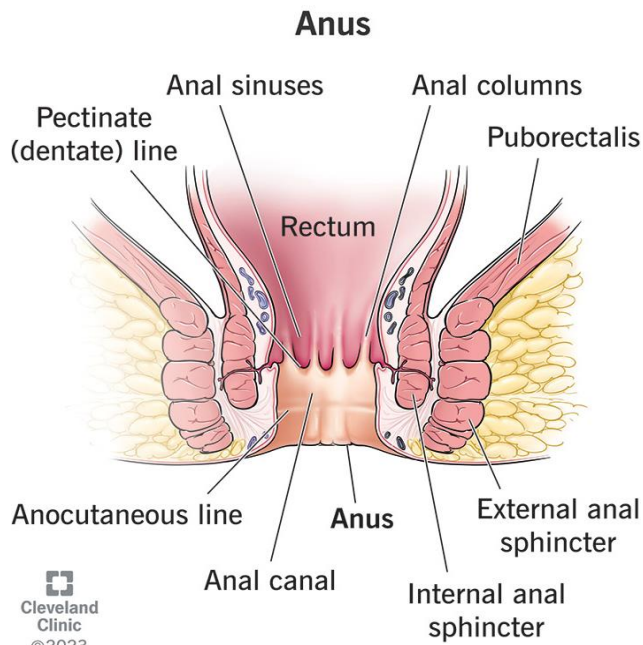
- None
-

2

ANORECTAL ABSCESSSES

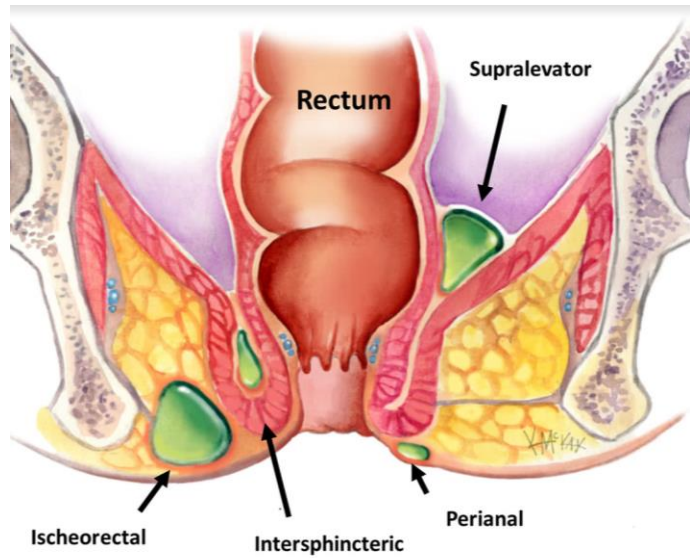
- Incidence
 - About 15 patient per 100,000 individuals
 - More common in males by ratio of 2.5:1
 - Mean age: 40
- Causes
 - Cryptoglandular
 - Crohn's

3

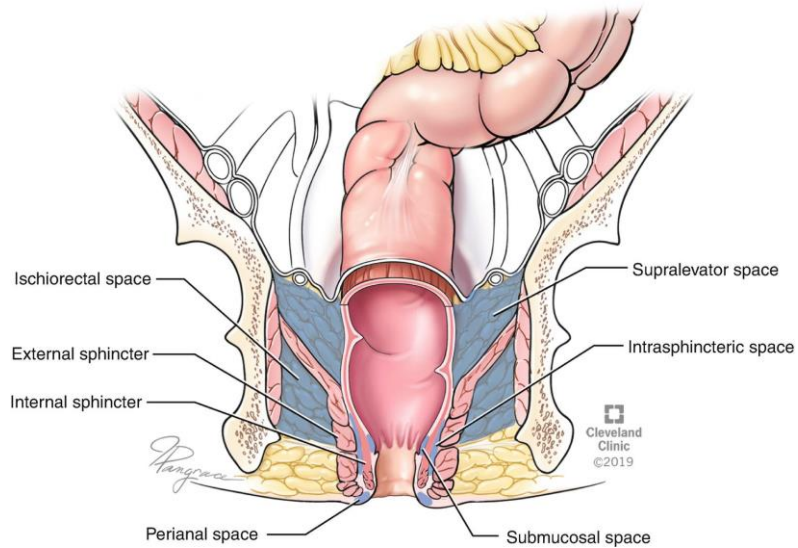


ANORECTAL ANATOMY

ANORECTAL ABSCESSSES



5



HORSESHOE ABSCESSSES

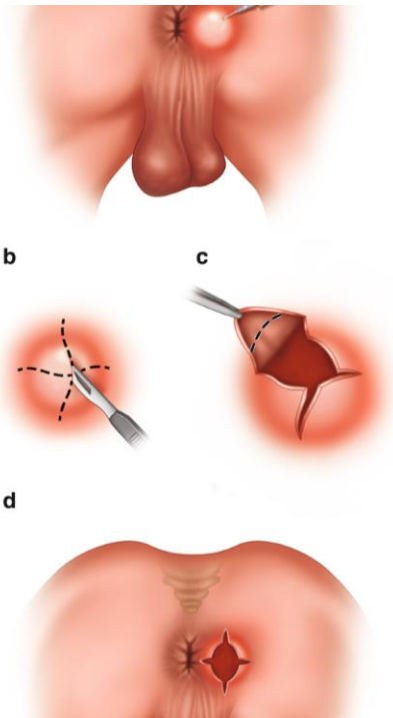
6



DIAGNOSIS

- Physical Exam
- +/- CT scan

7



TREATMENT

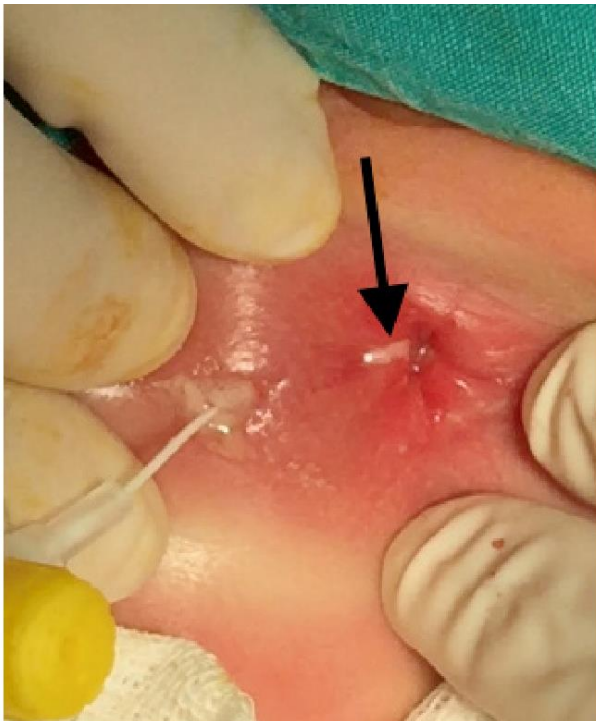
- Incision and Drainage
 - +/- Antibiotics
 - Immunosuppressed
 - Cellulitis
 - Sitz baths
-

8

PERIANAL FISTULA

- 90% related to cryptoglandular abscesses
 - Also seen in Crohn's, obstetrical injury, HIV, sarcoidosis, TB
 - Occurs in 30-40% of patients with perianal abscesses
-

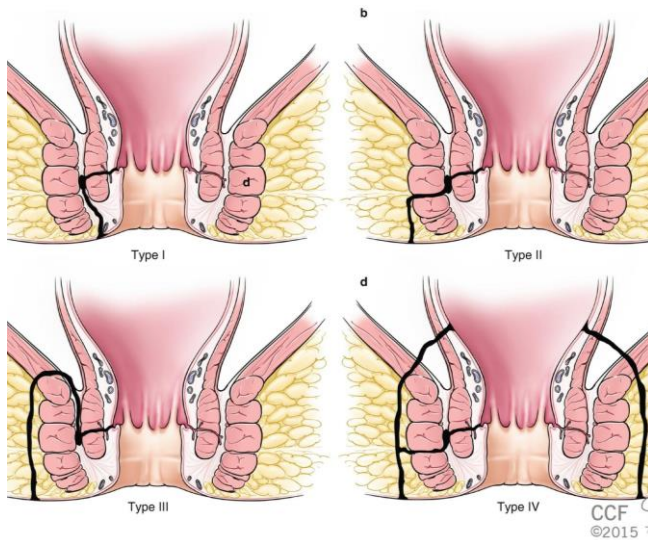
9



PERIANAL FISTULA PRESENTATION

- Recurrent abscess in same location
 - Constantly draining focus adjacent to anus
-

10



PERIANAL FISTULA TYPES

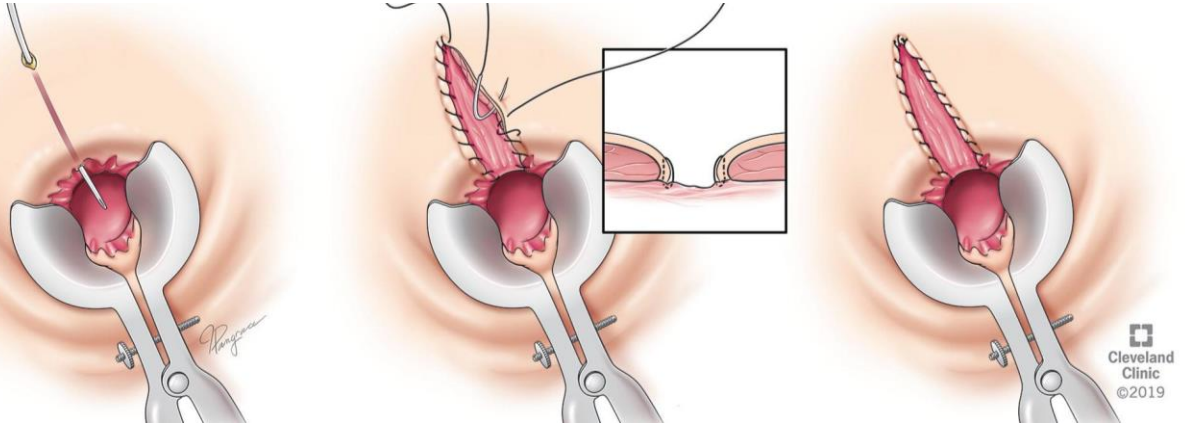
11

TREATMENT OF PERIANAL FISTULA

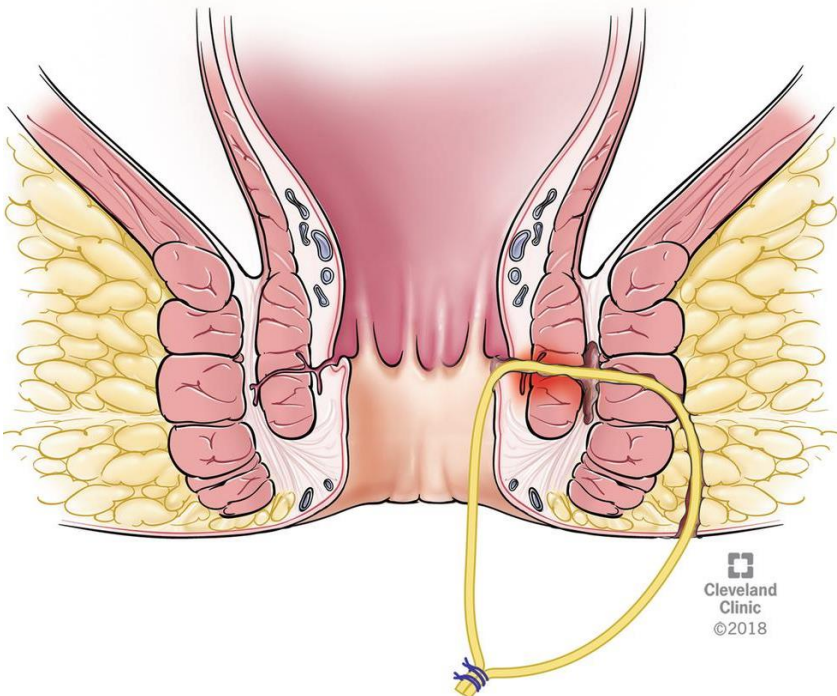
- Three main goals
 - Control sepsis
 - Definitive repair of fistula, limiting risk of recurrence
 - Maintenance of continence
- Depends on the anatomy of the fistula tract
- Perform Examination Under Anesthesia to determine treatment
 - Submucosal?
 - Fistulotomy
 - Transsphincteric?
 - Place seton
 - Intersphincteric?
 - Place seton?
 - Fistulotomy?

12

FISTULOTOMY



13



SETON PLACEMENT

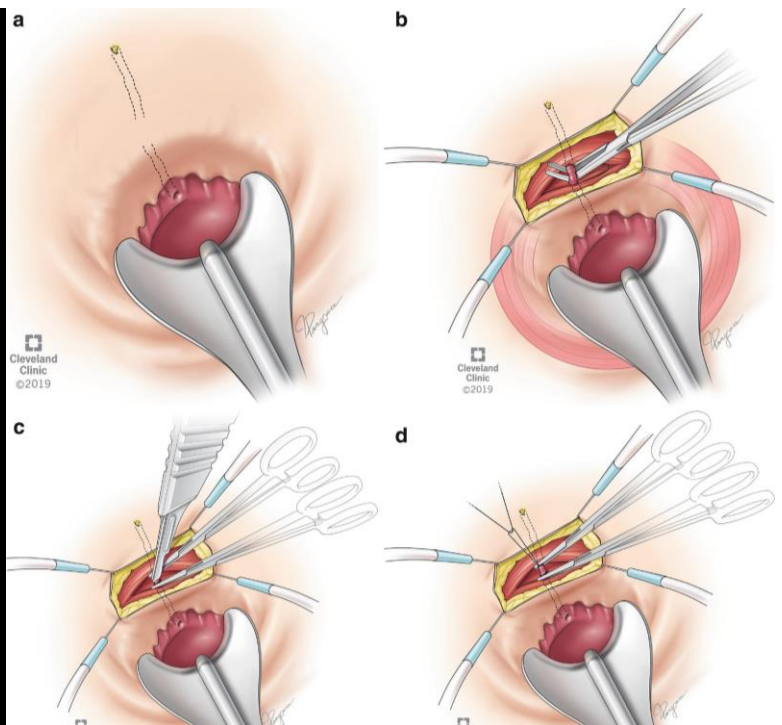
14

COMPLEX PERIANAL FISTULA REPAIRS

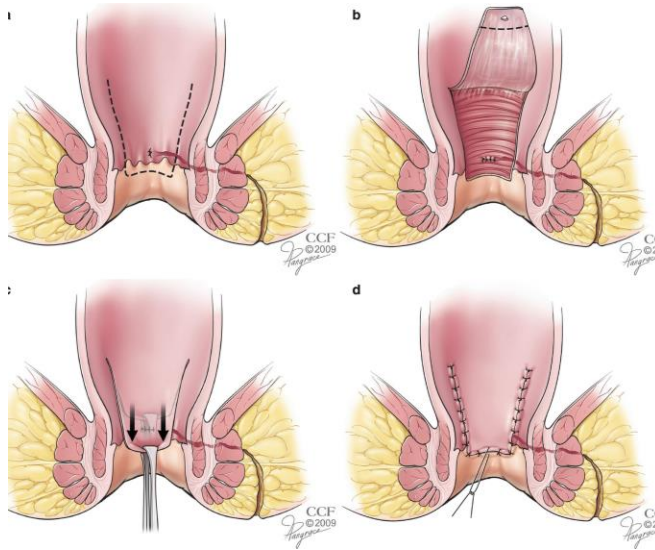
- Ligation of Intersphincteric Fistula Tract (LIFT)
- Endorectal Advancement Flap (ERAF)
- Fistula Plug
- Fibrin Glue
- Fistula Tract Laser Closure
- Stem Cell Therapy

15

LIGATION OF INTERSPHINCTERIC FISTULA TRACT (LIFT)

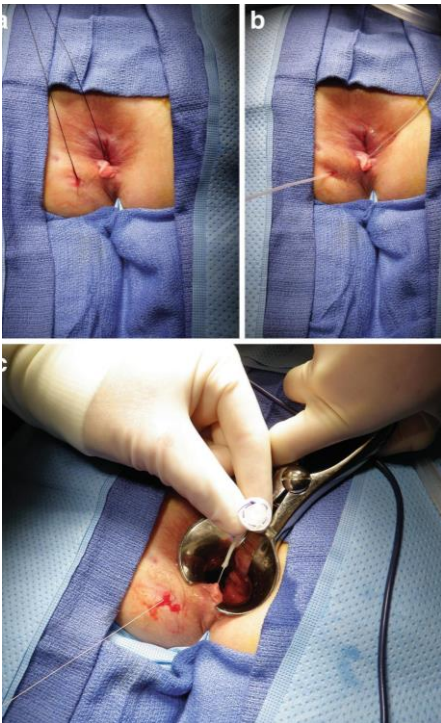


16



ENDORECTAL ADVANCEMENT FLAP

17



FISTULA PLUG

- Can be composed of biologic or synthetic material
- Placement can be combined with other surgery
- Success rate 24-88%

18

THE OTHERS...

- Fibrin Glue
 - Success rate: 14-94%
 - Fistula Laser Tract Closure
 - Success rate: 33-71%
 - Stem Cells
 - Success rate: 54% with stem cells alone, 83% with stem cells and fibrin, 18% with fibrin alone
 - Studies are ongoing
-

19

THANK YOU.



20